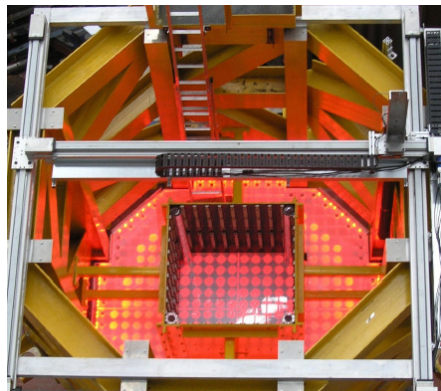
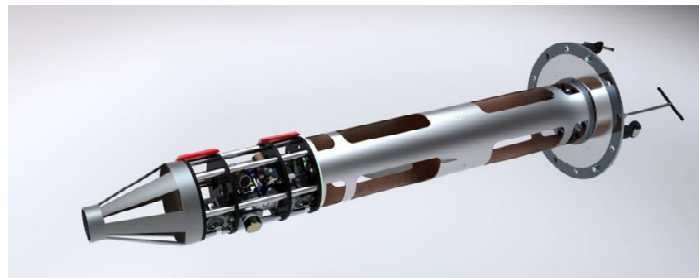
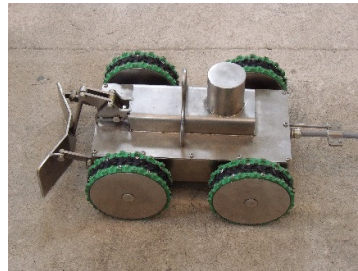


On the evening of Thursday October 12th 2017, an IMechE visit was conducted around the Amec Foster Wheeler laboratories based at Birchwood, Warrington. This was the ninth successive year in a row and popularity was maintained. Due to security considerations only one tour was offered to a group of 20 which was fully booked with some people having to remain in reservation.

Tour Description

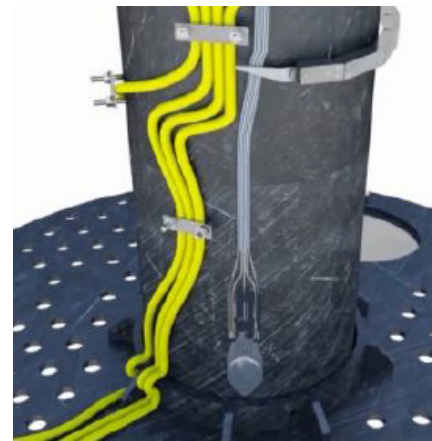
The tour began in 210C laboratory. The laboratory holds several test rigs and equipment including:

- Quarter Scale Core rig - modelling the graphite core of an Advanced Gas Reactor.
- Remotely Operated Vehicles - designed for high risk areas or hard to reach areas of nuclear plant.
- Bubble Count rig - which tests an automated machine vision technique to assess hydrogen release rate from skips of Magnox Swarf Storage Silos
- Small-bore Pipe Inspection rig – for development of the deployment of pill cameras around a torturous route with varying pipework bores.
- First Generation Magnox Fuel Storage Pond Drilling Package



The second half of the tour was conducted around the General Engineering Laboratory (GEL). Facilities include:

- A full-scale test rig representing one quarter of the top of the reactor dome of Hartlepool/Heysham 1 power stations (Hot Box Dome).
- Boiler Spine rig – used for the development of many techniques for the Boiler Spine campaign.
- AGR Fuel Channel and Channel rig – to test limitations of fuel and control channel alignments.
- BLIMP rig – used for testing and training for deployment of inspection equipment around torturous pipework routes.



The main presenters from Amec Foster Wheeler were:

- Martin Hooley (Decommissioning and Remediation)
- Matt Goundry (Engineering Development)

Support from:

- James Hatton (Decommissioning and Remediation)
- Simon White (Engineering Development)

The tour was enjoyed by all who intended with very good feedback provided.